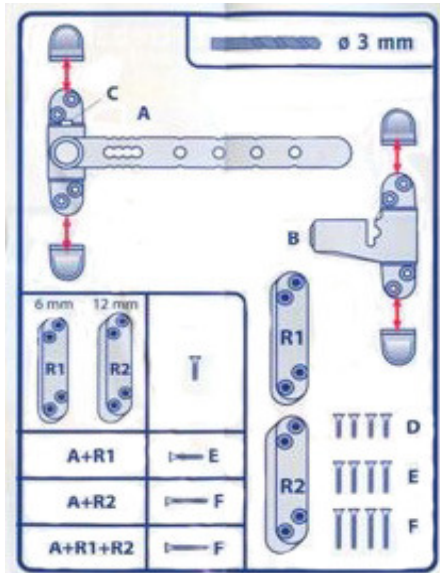




Socona - Airlock

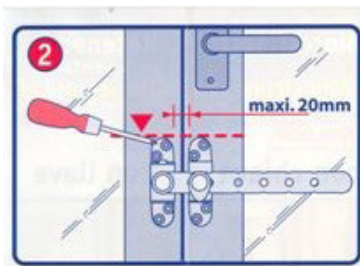
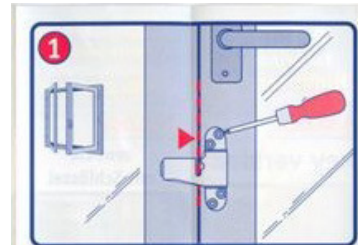
Fitting Instructions



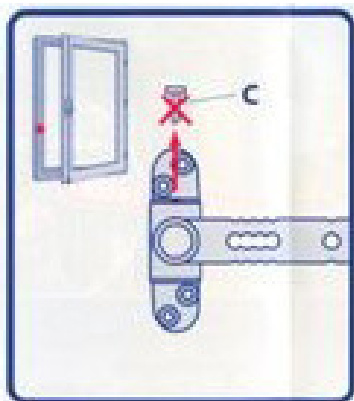
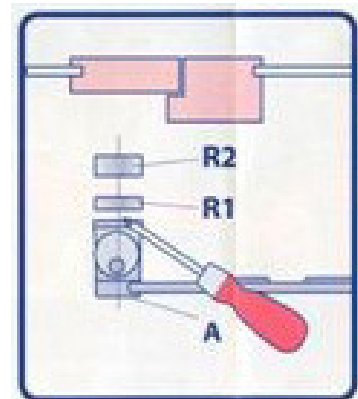
- A - Airlock Main Body
- B - Airlock Receiver
- C - Safety Pin
- D - Fixing Screws
- E - Fixing Screws
- F - Fixing Screws

- R - Spacers

On the Closed window, screw B on the face of the sash using screws D.



Screw down part A level with B, by raising part A with spacers R as required. NB Screw part B on the frame, and part A on the sash, if it opens outwards.



Ensure that pin C is removed from part B, before any movement of part B.

Please Note:

Do not pull the Airlock arm in the locked position, open the system with the key, and disengage the arm vertically.

